

FORCED ENTRY RESISTANT 15 MINUTES* HIGH SECURITY STEEL DOOR MODEL 9220

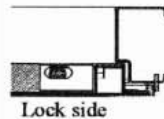


The forced entry resistant steel door is a high security door that provides protection against burglary attacks.

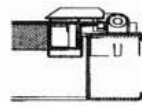
The construction is of reinforced steel with high security 4-way lock, and various accessories



Construction frame



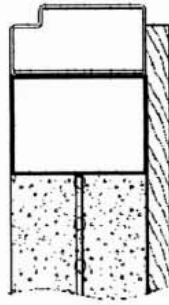
Lock side



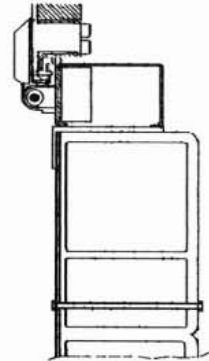
Hinge side

Frame profile width: 130 mm. (5 1/8")
The frame is made of 2 mm. (1/16") thick steel.
Frame finish: primer paint.

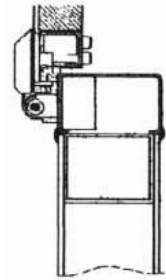
Reinforced concrete wall installation



Brick wall installation



Special forced entry wall installation



Approval:

1. SII spec. 196 - Multi-bolt-lock for Revolving door.
2. SII spec. 197 - Frame assemblies and parts for Protected areas.
3. Israeli Standard 950 - Cylindrical mechanism for Mortise door locks operation.
4. Israeli Foreign Affairs Ministry approval*.

Structure:

The Steel Door is made of two 1.25mm (18 sheet metal gages) bent casings, manufactured of hot dip galvanized steel sheets and 3-mm (1/8") thick plate between them. The door leaf is reinforced by 8 transversal steel bars, placed across the leaf between the casings. The casings and the bars are connected using spot and CO² welding. The door was ranged for 15-minute protection against forced entry according to the Israeli foreign affairs ministry standards.

Acoustic & thermal insulation:

The gaps between the horizontal bars are filled with self-extinguishing hard polystyrene foam, with a density of 13 Kg/m³ (0.810 lb/ft³) in compliance with Israeli Standard No. 634.

Door weight :

The door 800-mm wide leaf weighs 119 kg. (265.56 Lb.)
The door 800-mm wide frame weighs 46 kg. (102 Lb.)

Door dimensions:

Door height	Overall height including frames	Door width	Overall width-including frame
1900mm 74 ^{13/16"}	1974mm 77 ^{11/16"}	600mm 23 ^{5/8"}	740mm 29 ^{1/8"}
2000mm 78 ^{6/8"}	2074mm 83 ^{1/4"}	700mm 27 ^{9/16"}	840mm 33 ^{1/16"}
		800mm 31 ^{1/2"}	940mm 37"
		900mm 35 ^{7/16"}	1040mm 40 ^{15/16"}

Accessories & Hardware :

MUL-T-LOCK 4 way lock model 265, high security MUL-T-LOCK cylinder, double cylinder protector, protective cover plates and handles.

Optional Accessories:

Additional combination lock "Sargent & Greenleaf" model 8550.
Hydraulic door closer.
Decorative MDF panels (model "Iris") on one or both sides of the door leaf.

