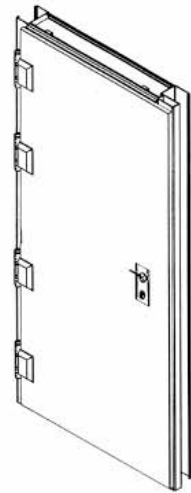


# FORCED ENTRY RESISTANT 15 MINUTES\* HIGH SECURITY STEEL DOOR MODEL 9230/9235

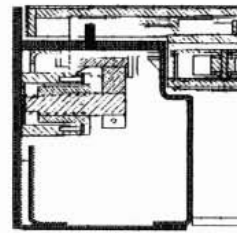


The forced entry resistant steel door is a high security door that provides protection against both burglary attacks and military rifles.

The construction is of reinforced steel with high security 4-way lock, patented frame locking mechanism and various accessories



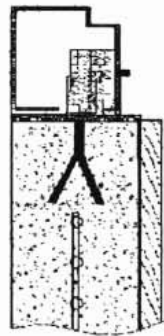
Construction frame



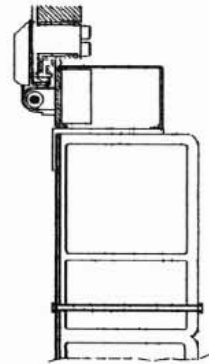
Lock side

Frame profile width: 130 mm. (5 1/8")  
The frame is made of 3 mm. (1/8") thick steel.  
Frame finish: primer paint.

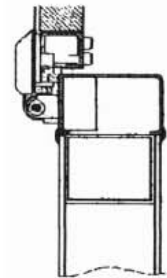
Reinforced concrete wall installation



Brick wall installation



Special forced entry wall installation



## Approval:

1. SII spec. 196 - Multi-bolt-lock for Revolving door.
2. SII spec. 197 - Frame assemblies and parts for Protected areas.
3. Israeli Standard 950 - Cylindrical mechanism for Mortise door locks operation.
4. UL 752 - Bullet - Resistant equipment.
5. SD-STD- 01.01 - G. -Forced Entry and Ballistic Resistant Protection\*.

## Structure:

The Steel Door is made of two 1.25mm (18 sheet metal gages) bent casings, manufactured of hot dip galvanized steel sheet and 6mm (1/4") thick steel plate between them. The door leaf is reinforced by 8 transversal steel bars, placed across the leaf between the casings. The casings and the bars are connected using spot and CO<sup>2</sup> welding. The door turns on 4 adjustable reinforced heavy-duty hinges.

The door was ranged for 15-minute protection against forced entry according to SD-STD- 01.01-G.

## Acoustic & thermal insulation:

The gaps between the horizontal bars are filled with self-extinguishing hard polystyrene foam, with a density of 13 Kg/m<sup>3</sup> (0.810 lb/ft<sup>3</sup>) in compliance with Israeli Standard No. 634.

## Door weight :

The door 800-mm wide leaf weighs 185 kg. (411.11 Lb.)  
The door 800-mm wide frame weighs 90 kg. (200 Lb.)

## Door dimensions:

Door height	Overall height including frames	Door width	Overall width-including frame
2040mm 80 <sup>5/16"</sup>	2114mm 83 <sup>1/4"</sup>	800mm 31 <sup>1/2"</sup>	990mm 39"

Special dimensions may be supplied upon request.

## Ballistic protection:

The forced entry resistant steel door model 9230 can be ordered with ballistic resistant characteristics (forced entry resistant steel door model 9235). Door model 9235 was certified for RF (Military Rifle) protection upon SD-STD- 01.01- G, and UL 752 level 4.

## Blast resistance:

The door has been throughly blast tested.

## Accessories & Hardware :

MUL-T-LOCK 4 way lock model 265, high security MUL-T-LOCK cylinder, double cylinder protector, protective cover plates and handles.

## Optional Accessories:

Additional combination lock "Sargent & Greenleaf" model 8550.  
Hydraulic door closer.  
Decorative MDF panels (model "Iris") on one or both sides of the door leaf.

